

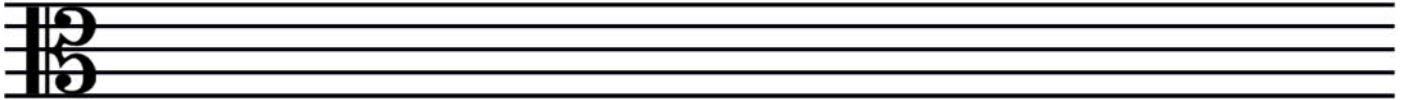
Music Notation

Staves and Clefs Continued

The Alto Clef

1. Learn to draw the alto clef.

When drawing the alto clef, try to recreate as best you can, its printed or engraved form.



Step 1: Begin by drawing two vertical lines. The first one should be roughly twice as thick as the second one. Stay inside the top and bottom lines of the staff.

Step 2: Draw two half circles resembling a backward "C". Lift your pencil after the first one. Make sure you do not cross the middle line but instead "point" to it.

2. Practice drawing the alto clef.



3. Name the notes on the alto clef.

